

Allow yourself to be immersed into the glory of nature – in this luxurious yet natural setting, let time stand still, as we provide unrivaled hospitality to nurture your soul to awareness of connection and relaxation beyond compare.

Visama has its roots in the ancient Sanskrit meaning "to journey". We invite you to book one of our 10 bespoke luxury tents to embark on your Visama journey in the heart of the Lanna region of Mae Chan, Chiang Rai.

Spread across 4 hectares (25 rai) of serene landscape, Visama offers an unparalleled escape into nature. Mae Chan enjoys a unique climate from November to February, with daytime temperatures ranging between 20-25°C, while evenings and nights can drop to a crisp 15°C, perfect for cozying up under the stars in our picturesque surroundings.



Travel Information

- To Elephant Peace Project: *Distance: 43.6 km, 1 hour travel*
- To White Temple วัดร่องขุน: *Distance: 51.1 km; 1 hour travel*
- To Blue Temple วัดร่องเสือเต้น: *Distance: 32.3 km; 44 min travel*
- To Black House พิพิธภัณฑ์บ้านดำ: *Distance: 25.2 km; 32 min travel*
- To Union of Hill Tribe Villages & Longneck Karen: *Distance: 23.4 km; 31 min travel*
- To Doi Tung: *Distance: 26.8 km; 35 min travel*
- To House of Opium Museum: *Distance: 49.1 km; 54 min travel*
- To local market in Mae Chan: *Distance: 8.1 km; 15 min travel*
- Pa Tueng Hot Springs: *Distance: 9.2 km; 15 min travel*
- To Golden Triangle, Chiang Saen: *Distance: 49 km; 54 min travel*
- To Jade Markets, Mae Sai: *Distance: 38.2 km; 50 min travel*
- To Mae Salong Market: *Distance: 35 km; 46 min travel*
- To Choui Fong Tea Plantation: *Distance: 12.4 km; 20 min travel*
- To Mae Fah Luang, Chiang Rai International Airport: *Distance: 32 km; 40 min travel*



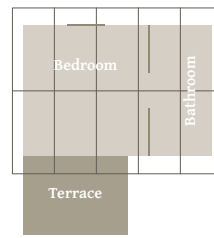
Room Types

Akha

Deluxe Safari Tent

Size: 36 Sqm & 12 Sqm Covered Veranda

- Luxury Standard Fitout
- Intent Bathroom (Rain Shower)
- King Size Bed
- Daily Replenish Minibar

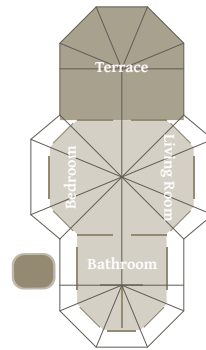


Yao

Deluxe Studio Safari Tent

Size: 40 Sqm & 12 Sqm Covered Veranda

- Luxury Standard Fit Out
- Intent Bathroom (Rain Shower)
- Corridor Bathub
- King Size Bed
- Daily Replenish Minibar

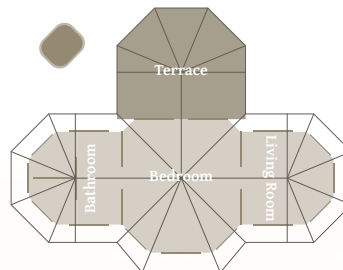


Lahu

One Bedroom Suite Tent

Size: 50 Sqm & 20 Sqm Covered Veranda

- Luxury Standard Fitout
- Intent Bathroom (Rain Shower)
- Corridor Bathub
- King Size Bed
- Living Room
- Dining Area
- Nespresso Machine
- Daily Replenish Minibar

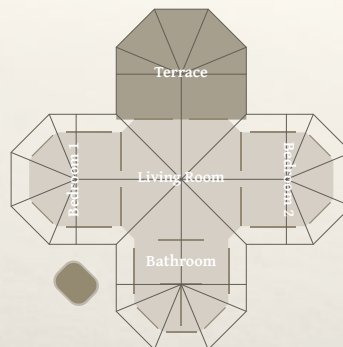


Lisu

Two Bedroom Suite Tent

Size: 60 Sqm & 20 Sqm Covered Veranda

- Luxury Standard Fitout
- Intent Bathroom (Rain Shower)
- Corridor Bathub
- Two King Size Bedrooms
- Living Room
- Dining Area
- Nespresso Machine
- Daily Replenish Minibar





Dining & Facilities

Reu Doo Gaan

A fun destination to enjoy authentic culinary preparations in a divine natural setting.

Open Every day: 06.30 - 23.00

Bar Amrut

Join us at Bar Amrut and embark on a journey where flavors, ambiance, and aesthetics harmonize to create an exceptional sensory adventure.

Open Every day: 06.30 - 23.00

The Ambalama

Enjoy unforgettable evenings at the Ambalama with a cozy fireplace and an outdoor theater, where you can relax under the stars and immerse yourself in nature.

Open Every day: 18.00 - 00.00

The Sala

A venue to meditate, to join our yoga, tai chi and Thai martial arts classes, The gong at the Sala brings in the changes each day flowing with the circadian rhythm of time.

Open Every day: 06.00 - 20.00

Earth Pond

18 x 3 m pool: the Oasis from the heat of the day. A great place to rest and relax with stunning hillside views. The pool is ideal for a leisurely swim or to fulfill your daily lap quota!

Open Every day: 07.00 - 19.00

Visama Mae Chan Experiences

Private Cooking School

Master your culinary skills with our VISAMA chefs, using organic, local ingredients to craft memorable dishes. Impress your loved ones with new, unique recipes.

A Field Or A Forest Picnic

Savor a romantic picnic in the fields or forest, with a menu crafted by our Head Chef and his team for a perfect outdoor experience.

Bike & Hike Adventure

Embark on an adventurous mountain bike tour through scenic landscapes, rice fields, and villages, with a hilltop bar stop just for you

Archery

Try your hand at archery with a qualified guide in a relaxed, fun environment—an activity for all to enjoy!

Union of Body & Mind

Start your Sunday with a peaceful 1-hour yoga session, breathing in fresh air and achieving balance amidst stunning views.

A Tree Planting Program

Join our sustainable tree-planting initiative to positively impact the environment and support local communities.

Spa

Enjoy personalized spa treatments tailored to your needs, with attentive therapists ensuring a truly rejuvenating experience.

Visama Signature Excursions

Elephant Whispers: A Journey of Connection and Conservation

Offered by Visama Lodge Mae Chan, this experience promises a perfect blend of luxury and ethical adventure, enriching your stay in Chiang Rai.

Experience an unforgettable journey from Visama Lodge Mae Chan to the heart of ethical elephant conservation in Chiang Rai. This exclusive excursion is designed for guests seeking a meaningful encounter with Thailand's majestic elephants while supporting their welfare.

Artistic Spirits of Chiang Rai: A Cultural Odyssey

Through this excursion, Visama guests will experience a profound connection to the artistry and spirituality that define Chiang Rai, making for an unforgettable journey through the heart of Thai creativity. Embark on a captivating half-day cultural excursion with Visama Lodge Mae Chan, designed to immerse you in the artistic soul of Chiang Rai. This journey celebrates the genius of Thailand's renowned artists through visits to the region's most iconic temples and installations: Wat Rong Khun, the Blue Temple, and the Black House.

Echoes of the Highlands: Discovering the Hill Tribes of Chiang Rai

Delve into the rich tapestry of Chiang Rai's hill tribe cultures with Visama Mae Chan's exclusive half-day excursion.

This journey takes you into the heartlands of the region's indigenous communities, offering an intimate glimpse into the lives and traditions of the Akha and Karen peoples.

Resort Map



Visama Mae Chan on Google Maps



Visama Mae Chan Website

