

Luxury Tented Camp

Allow yourself to be immersed into the glory of nature – in this luxurious yet natural setting, let time stand still, as we provide unrivaled hospitality to nurture your soul to awareness of connection and relaxation beyond compare.

Visama has its roots in the ancient Sanskrit meaning "to journey". We invite you to book one of our 10 bespoke luxury tents to embark on your Visama journey in the heart of the Lanna region of Mae Chan, Chiang Rai.

Visama Experiences

Visama 3 Days 2 Nights

Max Adult: 2 Max Children: 2

Experience the magic of Chiang Rai's authentic charms with Visama Mae Chan. Enjoy an all-inclusive package and experience signature daily activities that inspire you.

Visama 4 Days 3 Nights

Max Adult: 2 Max Children: 2

Embark on an unforgettable journey to Mae Chan and Chiang Rai and immerse yourself in the rich culture, all while indulging in the opulence of Visama-style luxury.

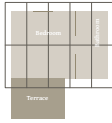


Accommodation

Visama 'Akha'

Superior & Deluxe Safari Tent
Size: 36 Sqm & 12 Sqm Covered Veranda

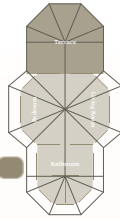
- Luxury Standard Fitout
- Intent Bathroom (Rain Shower)
- King Size Bed
- Seamlessly blends adventure and luxury
- Provides an extraordinary safari experience



Visama 'Yao'

Deluxe Studio Safari Tent
Size: 40 Sqm & 12 Sqm Covered Veranda

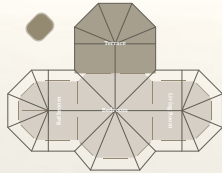
- Luxury Standard Fit Out
- Intent Bathroom (Rain Shower)
- Corridor Bathub
- King Size Bed
- Seamlessly blends adventure with luxury
- Offers an unparalleled safari experience in the wild



Visama 'Lahu'

One Bedroom Suite Tent
Size: 50 Sqm & 20 Sqm Covered Veranda

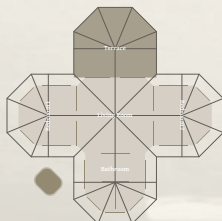
- Luxury Standard Fitout
- King Size Bed
- Living Room
- Dining Area
- Nespresso Machine
- Offers wilderness luxury
- An unforgettable retreat



Visama 'Lisu'

Two Bedroom Suite Tent
Size: 60 Sqm & 20 Sqm Covered Veranda

- Luxury Standard Fitout
- Two King Size Bedrooms
- Living Room
- Dining Area
- Nespresso Machine
- Offers opulent wilderness luxury
- Set amidst the beauty of nature



Dining & Facilities

Reu Doo Gaan

A fun destination to enjoy authentic culinary preparations in a divine natural setting.

Bar Amrut

Join us at Bar Amrut and embark on a journey where flavors, ambiance, and aesthetics harmonize to create an exceptional sensory adventure.

The Ambalama At Visama

An exceptional experience for our guests is special evenings at the Ambalama – The Ambalama is an ancient space for guests and travelers to gather and socialize.

The Sala

A venue to meditate, to join our yoga, tai chi and Thai martial arts classes, The gong at the Sala brings in the changes each day flowing with the circadian rhythm of time.

Earth Pond at Visama

18 x 3 m pool: the Oasis from the heat of the day. A great place to rest and relax with stunning hillside views. The pool is ideal for a leisurely swim or to fulfill your daily lap quota!





Visama Mae Chan Experiences

Private Cooking School

Master your culinary skills with our VISAMA chefs, using organic, local ingredients to craft memorable dishes. Impress your loved ones with new, unique recipes.

Price: 2,750 THB

A Field Or A Forest Picnic

Savor a romantic picnic in the fields or forest, with a menu crafted by our Head Chef and his team for a perfect outdoor experience.

Price: 1,500 THB

Bike & Hike Adventure

Embark on an adventurous mountain bike tour through scenic landscapes, rice fields, and villages, with a hilltop bar stop just for you

Price: 1,200 THB (Child)
2,000 THB (Adult)

Archery

Try your hand at archery with a qualified guide in a relaxed, fun environment—an activity for all to enjoy!

Price: 1,000 THB

Art & Craft Workshop

Unwind with creative activities like painting or pottery, designed to help you relax and rejuvenate.

Price: 3,250 THB (Acrylic)
3,250 THB (Coffee)

Union of Body & Mind

Start your Sunday with a peaceful 1-hour yoga session, breathing in fresh air and achieving balance amidst stunning views.

Price: 3,000 THB

A Tree Planting Program

Join our sustainable tree-planting initiative to positively impact the environment and support local communities.

Price: 550 THB

Spa

Enjoy personalized spa treatments tailored to your needs, with attentive therapists ensuring a truly rejuvenating experience.

Price: 3,000 THB (Thai & Foot massage; 2 hours)
3,000 THB (Scrub & Oil Massage; 2 hours)

Visama Signature Excursions

Elephant Whispers: A Journey of Connection and Conservation

Offered by Visama Lodge Mae Chan, this experience promises a perfect blend of luxury and ethical adventure, enriching your stay in Chiang Rai.

Experience an unforgettable journey from Visama Lodge Mae Chan to the heart of ethical elephant conservation in Chiang Rai. This exclusive excursion is designed for guests seeking a meaningful encounter with Thailand's majestic elephants while supporting their welfare.

4 persons and more: THB 4,500 per person day tour

Artistic Spirits of Chiang Rai: A Cultural Odyssey

Through this excursion, Visama guests will experience a profound connection to the artistry and spirituality that define Chiang Rai, making for an unforgettable journey through the heart of Thai creativity.

Embark on a captivating half-day cultural excursion with Visama Lodge Mae Chan, designed to immerse you in the artistic soul of Chiang Rai. This journey celebrates the genius of Thailand's renowned artists through visits to the region's most iconic temples and installations: Wat Rong Khun, the Blue Temple, and the Black House.

4 persons and more: THB 2,250 per person standard price day tour

Echoes of the Highlands: Discovering the Hill Tribes of Chiang Rai

Delve into the rich tapestry of Chiang Rai's hill tribe cultures with Visama Mae Chan's exclusive half-day excursion.

This journey takes you into the heartlands of the region's indigenous communities, offering an intimate glimpse into the lives and traditions of the Akha and Karen peoples.

4 persons and more: THB 2,250 per person standard price day tour

Travel Information

Elephant Whispers: A Journey of Connection and Conservation

VSM to Elephant Peace Project

ระยะทาง 43.6 KM ใช้เวลาเดินทาง 1 ชั่วโมง

Artistic Spirits of Chiang Rai: A Cultural Odyssey

White Temple - Blue Temple - Black House

วัดร่องขุน-วัดร่องเสือเต้น-พิพิธภัณฑ์บ้านดำ

VSM to วัดร่องขุน

ระยะทาง 51.1 KM ใช้เวลาเดินทาง 1 ชั่วโมง

VSM to วัดร่องเสือเต้น

ระยะทาง 32.3 KM ใช้เวลาเดินทาง 44 นาที

VSM to บ้านดำ

ระยะทาง 25.2 KM ใช้เวลาเดินทาง 32 นาที

Echoes of the Highlands: Discovering the Hill Tribes of Chiang Rai

VSM to Union of Hill Tribe Villages & Longneck Karen

ระยะทาง 23.4 KM ใช้เวลาเดินทาง 31 นาที

VSM to Doi Tung

ระยะทาง 26.8 KM ใช้เวลาเดินทาง 35 นาที

VSM to House of Opium Museum

ระยะทาง 49.1 KM ใช้เวลาเดินทาง 54 นาที

VSM to local market in Mae Chan

ทาง 8.1 KM ใช้เวลาเดินทาง 15 นาที

VSM to Golden Triangle, Chiang Saen

ระยะทาง 49 KM ใช้เวลาเดินทาง 54 นาที

VSM to Jade Markets, Mae Sai

ทาง 38.2 KM ใช้เวลาเดินทาง 50 นาที

VSM to Mae Salong Market

ระยะทาง 35 KM ใช้เวลาเดินทาง 46 นาที



GPS coordinates:
20.1499310, 99.8105480