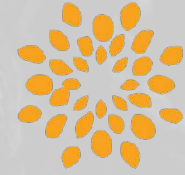




Visama

Mae Chan

maechan.visamalodges.com



Visama

Our luxury tented camps are based on careful site selection and rigorous development, that can sustain multiple-day stays through the development of local activities, wellness programs and farm-to-table culinary delights. By leveraging decades of inhouse partner expertise in design, development, brand-building, operations and finance, we value-engineer capital expenditures while delivering world-class guest experiences.



Visama
Mae Chan

Escape from the hustle and bustle of everyday life. Visama Lodge Mae Chan offers a luxury retreat into nature, an opportunity to reconnect with the wild, and a chance to declutter and disconnect from stress, while indulging in the art of living well.

maechan.visamalodges.com



Visama Mae Chan offers a remote nature yet very accessible location that sustains multiple-day stays through the development of local activities and wellness programs. We also prioritize providing direct income, vocational training, and sustainability benefits to the local community and proactively involve ourselves in nature conservation both on the property and beyond its local borders.

At Visama Mae Chan, we craft luxurious, immersive experiences that leave an unforgettable impression on guests, the local community, and the environment.

Our Luxury Tents



Visama 'Akha' Standard Safari Tent

- Standard Tent
- 36 Sqm
& 12 Sqm Covered Veranda
- Luxury Standard Fitout
 - Intent Bathroom (Rain Shower)
- King Size Bed

Visama 'Yao' Deluxe Studio Safari Tent

- Deluxe Studio Tent
- 40 Sqm
& 12 Sqm Covered Veranda
- Luxury Standard Fit Out
 - Intent Bathroom (Rain Shower)
- Corridor Bathtub
 - King Size Bed

Visama 'Lahu' One Bedroom Suite Tent

- One Bedroom Suite Tent
- 50 Sqm
& 20 Sqm Covered Veranda
- King Size Bed
 - Living Room
 - Sofa
 - Dining Area
- Nespresso Machine
 - Luxury Standard Fitout

Visama 'Lisu' Two Bedroom Suite Tent

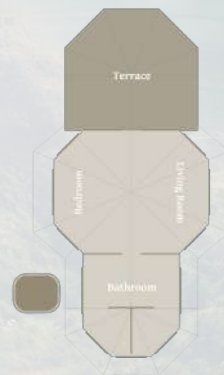
- Two Bedroom Suite Tent
- 60 Sqm
& 20 Sqm Covered Veranda
- King Size Bed
 - Living Room
 - Sofa
 - Dining Area
- Nespresso Machine
 - Luxury Standard Fitout

Visama Tent Layouts



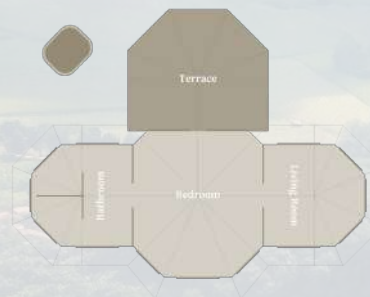
Visama 'Akha' Standard Safari Tent

Introducing the Visama 'Akha' a 36 sqm luxury safari tent with a 12 sqm veranda, in-tent rain shower, and plush king-size bed. It offers a seamless blend of adventure and luxury for an extraordinary safari experience.



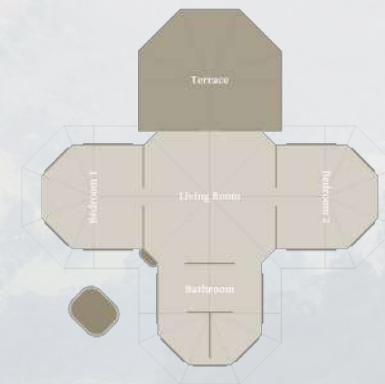
Visama 'Yao' Deluxe Studio Safari Tent

Introducing the Visama 'YAO' a luxurious 40 sqm safari tent with a 12 sqm veranda, in-tent rain shower, and king-size bed. It blends adventure with luxury for an unparalleled safari experience in the wild.



Visama 'Lahu' One Bedroom Suite Tent

Introducing the Visama 'LAHU' a 1-bedroom suite tent spanning 50 sqm with a 20 sqm veranda. It features a king-size bed, a comfortable living room, and a dining area. Enjoy Nespresso coffee and wilderness luxury in this unforgettable retreat.



Visama 'Lisu' Two Bedroom Suite Tent

Introducing the Visama 'LISU' a luxurious 2-bedroom suite tent spanning 60 sqm with a 20 sqm veranda. It features two king-size bedrooms, a cozy living room, and a dining area. Enjoy Nespresso coffee and wilderness luxury in this opulent retreat amidst nature's beauty.

In Tent Amenities



Telephone



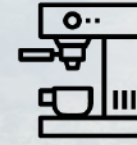
Refrigerator/
Mini Bar



Electric Kettle



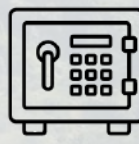
French Press for Locally
Grown Arabica Coffee



Espresso Machine with
Locally Grown Arabica
Coffee in capsules



Glass bottled
drinking water



Safety Deposit Box



His and Hers
Bathrobes & Slippers



Towel



Toiletries



Hair Dryer



Private Ecofriendly
Shopping Bag



Umbrellas



Flashlight



Rain Shower



Wifi



Bathtub



Special amenities
on request



First Aid support
from the Reception



24 hour concierge
contact to our team

Dining & Facilities



Reu Doo Gaan
Eatery



**The Bar Amrut
& Willem's Ladder**



The Ambalama
The Gathering Place



The Sala
A venue to meditate



Earth Pond
Visama Pool



Reu Doo Gaan Eatery
Open Daily 6:30 am to 11 pm

Chef Suphannat and his Culinary Team have ambitiously crafted a menu based on both Lanna Traditional Cuisine of Northern Thailand, nutrition rich comfort foods and specialties based on a farm that you can see from the view of Reu Doo Gaan to your table... combined with organic produce sourced close to the resort – both your health and your palate will be happy as a result. Fine wines, hand crafted beverages and fresh ground coffees, locally picked teas and herbal remedies round out a great venue to enjoy Reu Doo Gaan Eatery.



The Bar Amrut **Open Daily 7 am to 11 pm**

The Nectar of the Gods – Amrut is also known as the most famous single malt on the Indian sub-continent. Enjoy a variety of single malts, fine wines, hot & cold cocktails, everlasting Mojitos and Margaritas and last but not least our delicious tropical health cocktails – Bar appetizer menu selection to match. The Bar Amrut is formed from an original traditional Thai House built 120 years ago... many a romantic tale has graced this lovely house from the days before the automobile to the Age of AI.



The Ambalama The Gathering Place

The ancient cultures of the world embraced stories of years gone by around the fire place – join us here for narrated stories from inspired writers, historians, and storytellers. Sunset Daily and look out for Cinema Paradiso – Movies to Starlight around the Ambalama.



The Sala As per calendar weekly

A venue to meditate, to join our yoga, tai chi and Thai martial arts classes, The gong at the Sala brings in the changes each day flowing with the circadian rhythm of time.



**The Earth Pond Visama Pool
Open Daily 7 am to 7 pm**

14 x 3 m pool: the Oasis from the heat of the day. A great place to rest and relax with stunning hillside views.

Visama Mae Chan Experiences

Cultural, Heritage, Culinary Arts and Outdoor Adventures in Northern Thailand



Private Cooking School



A Field Or A Forest Picnic



Bike & Hike Adventure



Archery



Art & Craft Workshop



Union Of Body & Mind



A Tree Planting Program



Visama Spa



Private Cooking School

Elevate your culinary skills with the help of our VISAMA chef's team, who specialize in using organic local food products and unique recipes to create unforgettable dining experiences. Learn from a true culinary expert and impress your friends and family with your specialty dishes.



A Field Or A Forest Picnic

Are you going to PICNIC tomorrow? An excursion or outing, A field or forest with VISAMA's Specialty Dishes.



Bike & Hike Adventure

If you are looking for an adventurous mountain bike tour, the scenic Visama nearby is a great option. The tour takes you through diverse landscapes, and the natural beauty surrounding the route is breathtaking. You will come across hillsides covered with rice fields and local villages, adding to the overall charm of the region. During the tour, you will also stop at a hilltop access point to enjoy a private bar designed especially for you.



Archery

Archery is a sport that can be enjoyed by everyone! At Visama, there is a unique pleasure associated with every moment of the day. Archery, an activity known for centuries, has retained its traditional charm. If you've never tried it, why not try it this time? Join a friendly session with a qualified guide and enjoy archery target practice.



Art & Craft Workshop

At Visama, we understand that life can be stressful and unwinding is necessary. Here, you can enjoy limitless activities. We recommend trying painting or making handmade clay pots. These activities can help you relax and rejuvenate.



Union Of Body & Mind

Visama invites you to embrace your inner peace and start your Sunday mornings off right with a complimentary 1-hour yoga class. Breathe in the fresh air and let your body relax, as you prepare for a day of tranquility and balance. Yoga mats and drinking water are provided to ensure a comfortable and rejuvenating experience for all guests.



A Tree Planting Program

We believe in the importance of sustainability and recognize trees' role in protecting the environment. As such, we are excited to announce our collaboration with FTD to initiate a tree-planting program to enhance global greenery. This initiative aims to promote sustainable practices and reduce carbon footprints. With our combined efforts, we want to positively impact the environment and inspire others to do the same. Working together can create a better future for ourselves and future generations. Join us in our mission to protect the planet and create a sustainable future.



Visama Spa

Indulge in an unforgettable experience at our spa, where we make it our mission to tailor each treatment to your unique needs. Our treatment menu serves as a starting point, but our ultimate goal is to personalize your journey towards healing and relaxation. Our therapists are here to listen to your medical history and requirements, ensuring that you receive a truly personalized treatment. Throughout your time with us, we welcome you to communicate your preferences and desires so that we can exceed your expectations. Let us show you how our personalized approach to spa treatments can make all the difference.

External Experiences

What to do and see when in Chiang Rai – the Lanna Kingdom of Thailand



Black House Chiang Rai



Doi Tung



Visama Spa



Opium Museum



**Chef's Tailor made
Market visits in Mae Chan**



Chiang Saen



**Jade Markets at Myanmar –
Thailand Border**



**Northern Hill Tribe
Communities**

Travel Information



Elephant Whispers: A Journey of Connection and Conservation

VSM to Elephant Peace Project
ระยะทาง 43.6 KM ใช้เวลาเดินทาง 1 ชั่วโมง



Artistic Spirits of Chiang Rai: A Cultural Odyssey

(White Temple - Blue Temple - Black House)
(วัดร่องขุ่น, วัดร่องเสือเต้น, พิพิธภัณฑ์บ้านดำ)

VSM to วัดร่องขุ่น
ระยะทาง 51.1 KM ใช้เวลาเดินทาง 1 ชั่วโมง

VSM to วัดร่องเสือเต้น
ระยะทาง 32.3 KM ใช้เวลาเดินทาง 44 นาที

VSM to บ้านดำ
ระยะทาง 25.2 KM ใช้เวลาเดินทาง 32 นาที



Echoes of the Highlands: Discovering the Hill Tribes of Chiang Rai

VSM to Union of Hill Tribe Villages
& Longneck Karen
ระยะทาง 23.4 KM ใช้เวลาเดินทาง 31 นาที

maechan.visamalodges.com

Travel Information



VSM to Doi Tung
ระยะทาง 26.8 KM ใช้เวลาเดินทาง 35 นาที



VSM to House of Opium Museum
ระยะทาง 49.1 KM ใช้เวลาเดินทาง 54 นาที



VSM to local market in Mae Chan
ระยะทาง 8.1 KM ใช้เวลาเดินทาง 15 นาที



VSM to Golden Triangle, Chiang Saen
ระยะทาง 49 KM ใช้เวลาเดินทาง 54 นาที



VSM to Jade Markets, Mae Sai
ระยะทาง 38.2 KM ใช้เวลาเดินทาง 50 นาที

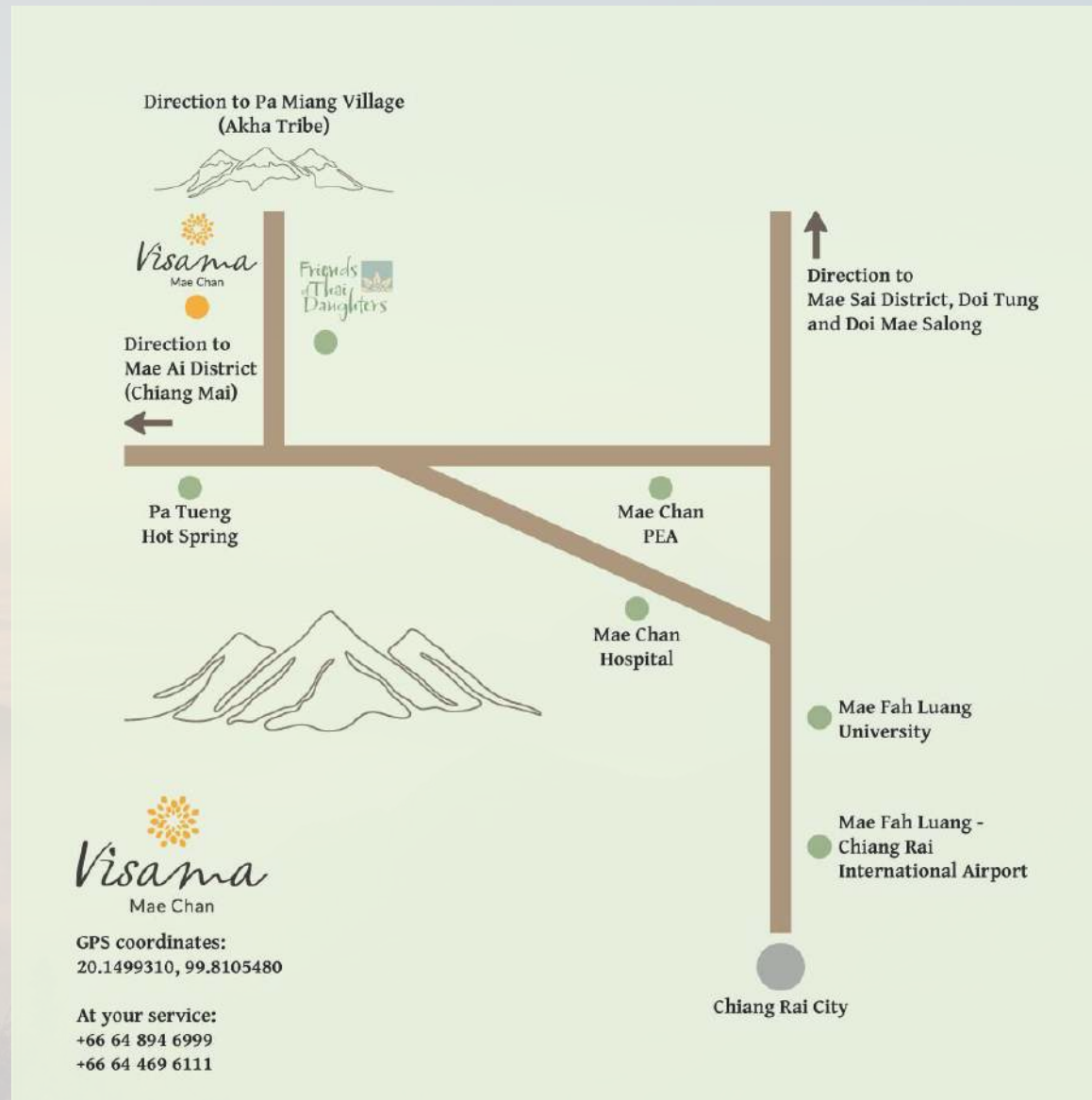


VSM to Mae Salong Market
ระยะทาง 35 KM ใช้เวลาเดินทาง 46 นาที

Our Location



Our Location



Resort Map



We look forward to welcoming you at



Visama

Mae Chan